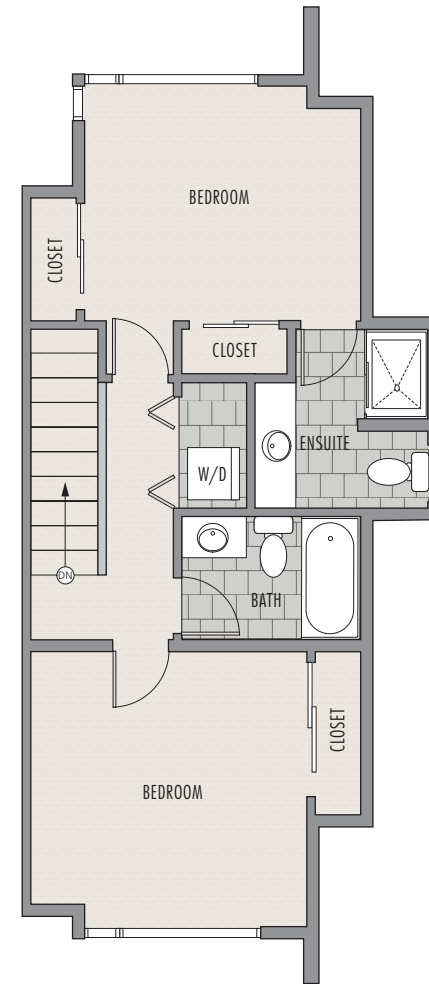
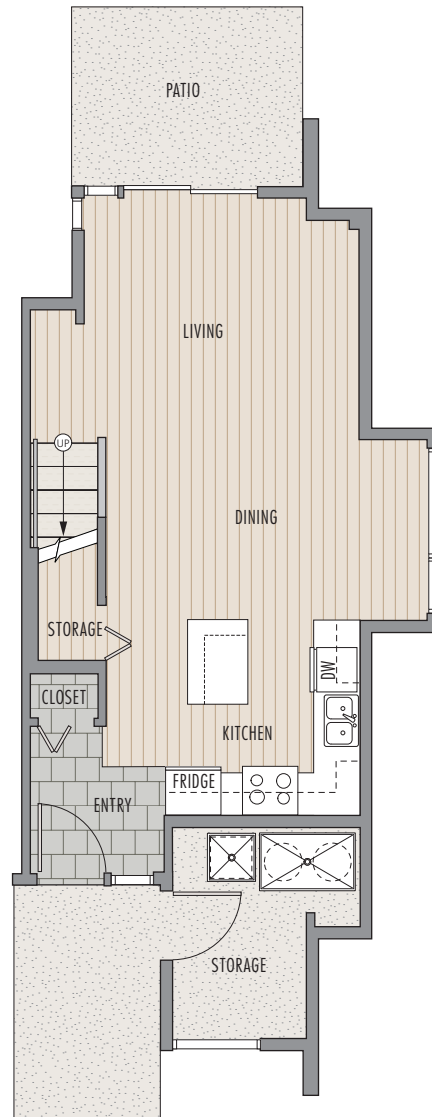
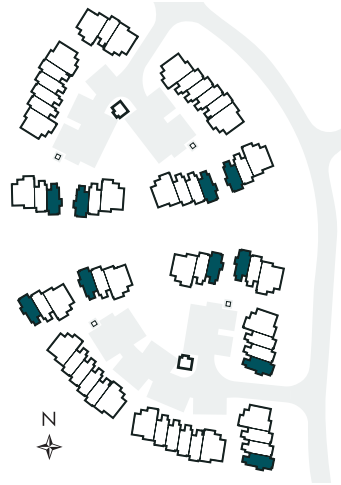




THE RISE Cheakamus CROSSING



UNIT B1
2 BED, 2 BATH + STORAGE
1106 APPROX. SQ.FT.
INCLUDING 42 STORAGE



SQUARE FOOTAGE BASED ON ARCHITECTURAL PLANS AND FINISHED SIZE MAY VARY. THE DEVELOPER RESERVES THE RIGHT TO MODIFY OR CHANGE SPECIFICATIONS AND PLANS WITHOUT NOTICE AS DEEMED NECESSARY. E&OE.

Sales by: **WHISTLER REAL ESTATE** This is not an offering for sale. Any such offering may only be made by disclosure statement.
company limited Renderings and plans are for illustration purposes and are subject to change without notice.