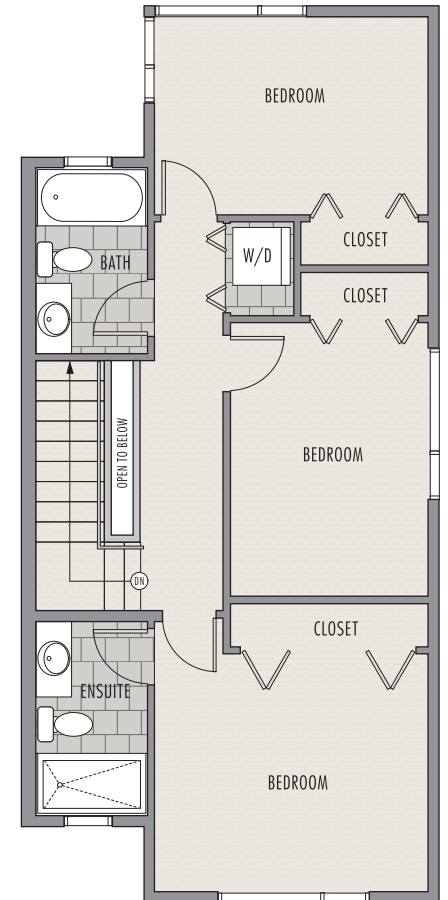
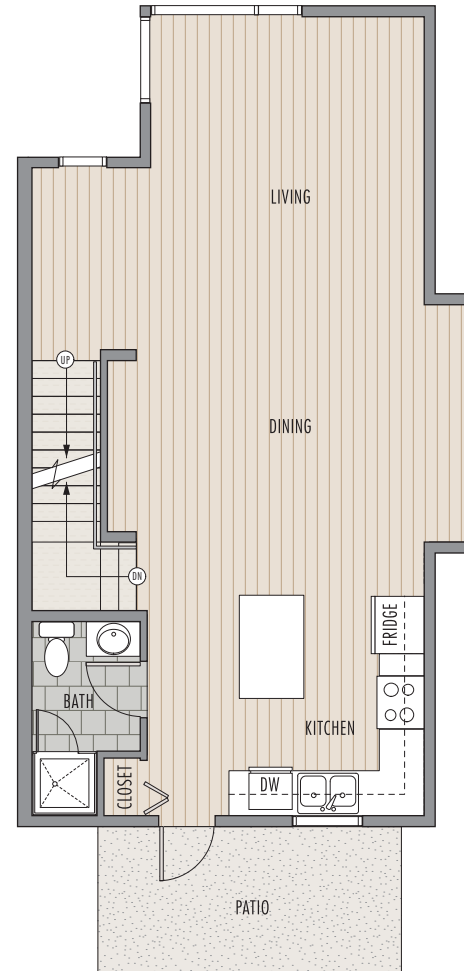
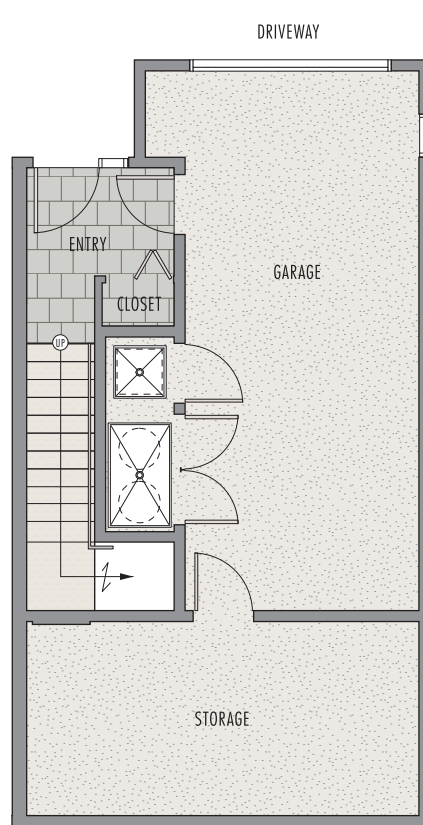
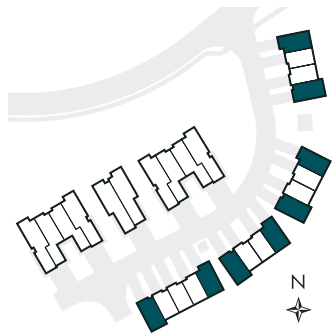




THE
HEIGHTS
Cheakamus
CROSSING



UNIT A
3 BED, 3 BATH + STORAGE
1,720 APPROX. SQ.FT.
INCLUDING 216 STORAGE



SQUARE FOOTAGE BASED ON ARCHITECTURAL PLANS AND FINISHED SIZE MAY VARY. THE DEVELOPER RESERVES THE RIGHT TO MODIFY OR CHANGE SPECIFICATIONS AND PLANS WITHOUT NOTICE AS DEEMED NECESSARY. E&OE.

Sales by: *the* **WHISTLER REAL ESTATE** *company limited* This is not an offering for sale. Any such offering may only be made by disclosure statement. Renderings and plans are for illustration purposes and are subject to change without notice.