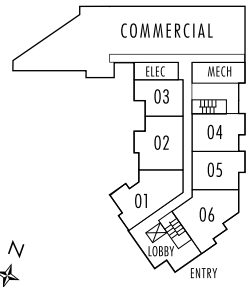


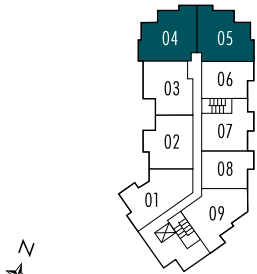


# THE FALLS

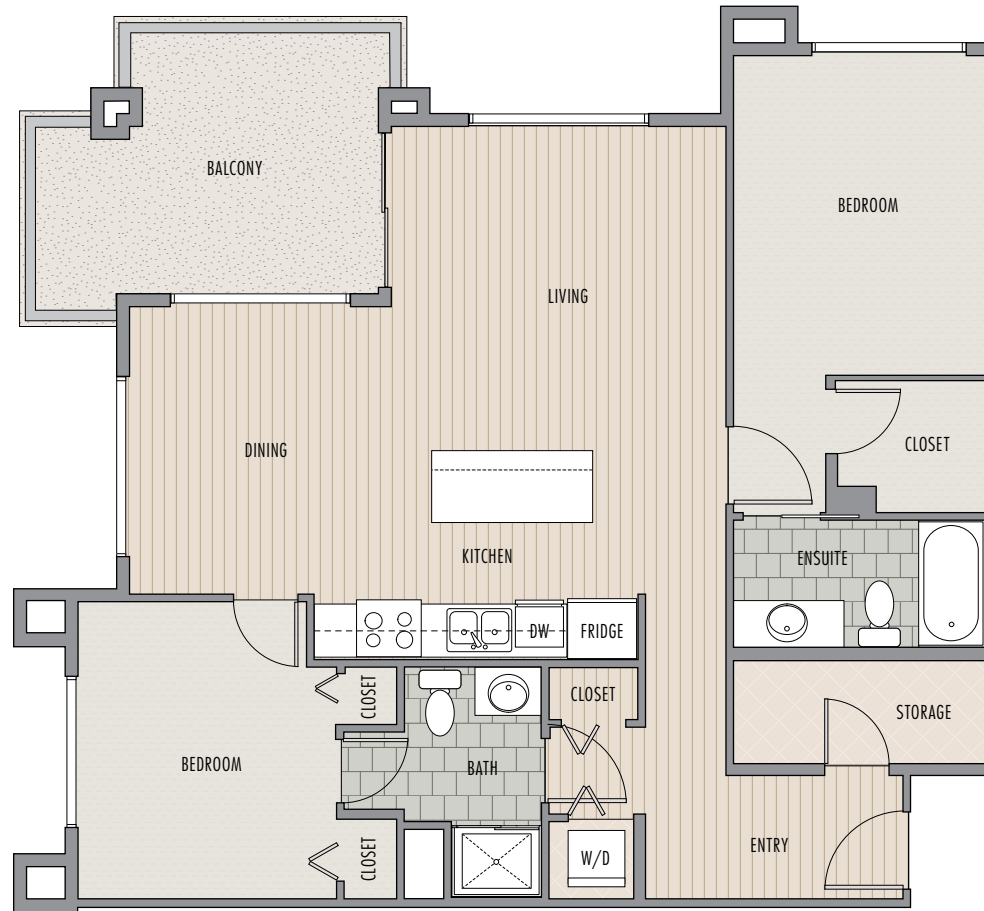
## Cheakamus CROSSING



1<sup>ST</sup> FLOOR



2<sup>ND</sup>, 3<sup>RD</sup> & 4<sup>TH</sup> FLOORS



**UNIT C3**  
**2 BED, 2 BATH + STORAGE**  
**1017** APPROX.  
 SQ.FT.



SQUARE FOOTAGE BASED ON ARCHITECTURAL PLANS AND FINISHED SIZE MAY VARY. THE DEVELOPER RESERVES THE RIGHT TO MODIFY OR CHANGE SPECIFICATIONS AND PLANS WITHOUT NOTICE AS DEEMED NECESSARY. E&OE.

Sales by: **the WHISTLER REAL ESTATE** This is not an offering for sale. Any such offering may only be made by disclosure statement.  
*company limited* Renderings and plans are for illustration purposes and are subject to change without notice.

604.938.9222 [cheakamuscrossing.ca](http://cheakamuscrossing.ca)