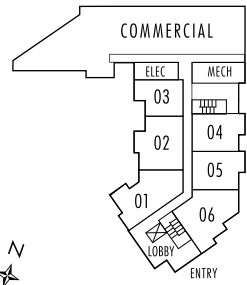


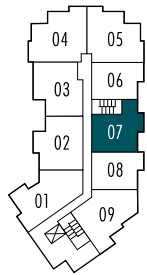


THE FALLS

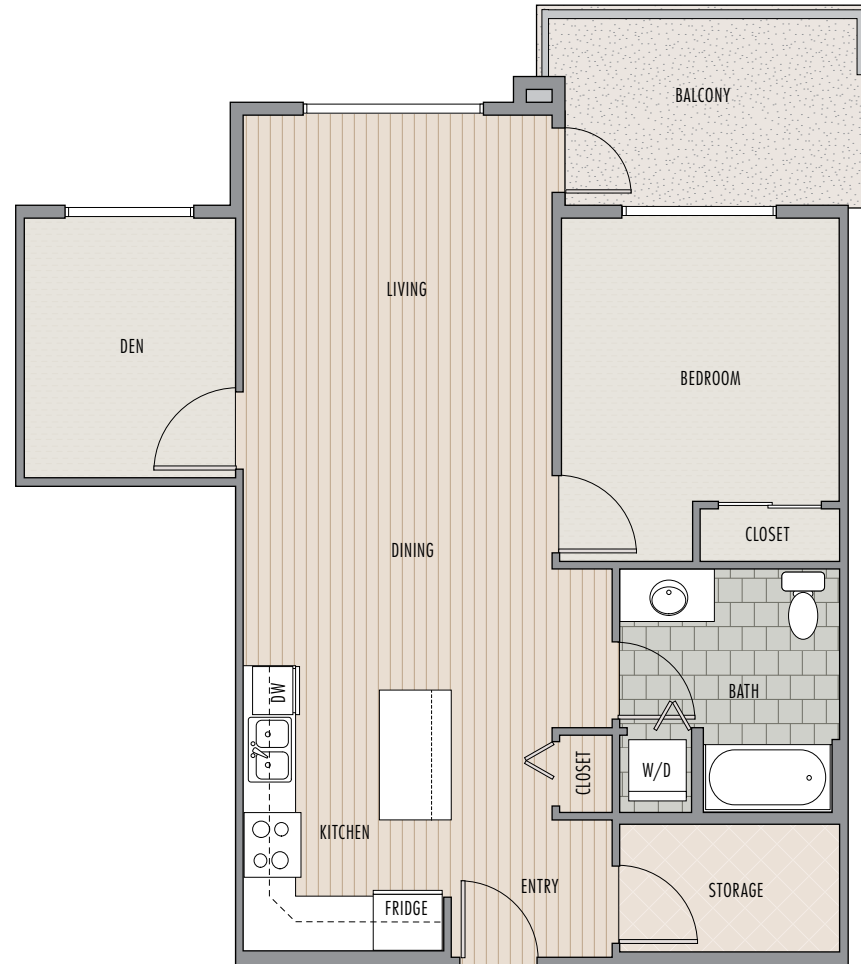
Cheakamus CROSSING



1ST FLOOR



2ND, 3RD & 4TH FLOORS



UNIT **BI**

1 BED, 1 BATH + STORAGE

842 APPROX.
SQ.FT.



SQUARE FOOTAGE BASED ON ARCHITECTURAL PLANS AND FINISHED SIZE MAY VARY. THE DEVELOPER RESERVES THE RIGHT TO MODIFY OR CHANGE SPECIFICATIONS AND PLANS WITHOUT NOTICE AS DEEMED NECESSARY. E&OE.

Sales by: **the WHISTLER REAL ESTATE** company limited. This is not an offering for sale. Any such offering may only be made by disclosure statement. Renderings and plans are for illustration purposes and are subject to change without notice.